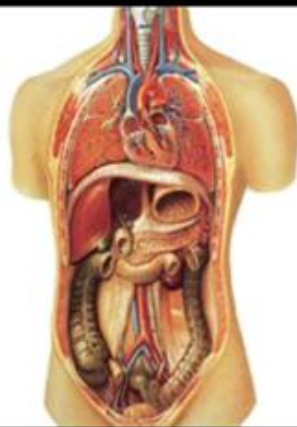




**SHREE H.N. SHUKLA**

# **HOMOEOPATHIC**

**MEDICAL COLLEGE & HOSPITAL**



**DEPARTMENT OF  
ANATOMY**

**DEPARTMENT  
OF  
ANATOMY**

**QUESTION BANK  
ANATOMY PAPER-1**



SHREE H.N. SHUKLA  
**HOMOEOPATHIC**  
MEDICAL COLLEGE & HOSPITAL  
DEPARTMENT  
OF  
**ANATOMY (PAPER-1)**

## UPPER LIMB

Sept-2002:Pectoralis major(5)

Sept-2002:Median nerve in forearm(5)

Sept-2002:, Aug-2006April-2004:: August-2003July-2013:April-2012:April-2011:

Sept-2010: April-2010::cubital fossa(5)

Sept-2002:May-2003:Sept-2010Old::superficial palmar arch(5)

Sept-2002:serratus anterior(5)

Sept-2002:thenar eminence(5)

Sept-2002:, Sept-2005:, Aug-2007:, August-2003:April-2015:April-2004July-2013::Sept-2012New:: Describe in detail the anatomy ofApril-2011: axilla with applied anatomy(15)

April-2006: April-2003:Describe anatomy of female breast in detail with applied anatomy(15)

Sept-2011:Mammary gland(15)

April-2006 , Aug-2006: : Trapezius muscle(5)

Sept-2005: Nail(5)

Sept-2005: March-2013:carpal tunnel syndrome(5)

Sept-2005:March-2013:Sept-2011:April-2010: August-2004: deltoid muscle(5)

Aug-2006: axillary artery(5)

Aug-2006: thenar muscles(5)

Aug-2006: palmar aponeurosis(5)

Aug-2006: , Aug-2007New::wrist drop(5)

April-2015April-2011: :carpal tunnel(5)

**April-2015:applied anatomy of cubital fossa(5)**  
**April-2003Sept-2012: :brachial arthey(5)**  
**March-2003:anastomoses around scapula(10)**  
**March-2003:ulnar artery(10)**  
**July-2013Sept-2012: Sept-2011::ulnar nerve(5)**  
**March-2003:flexor retinaculum(10)**  
**August-2004: flexor digitorum profundus(5)**  
**April-2012: extensor retinaculum(5)**  
**May-2003:April-2004(15)April-2012: :Sept-2011:Sept-2010: Shoulder joint(12)**  
**May-2003:Flexor muscles of forearm(origin, insertion, and nerve supply)(6)**  
**April-2004:August-2003March-2013April-2012: ::median nerve(5)**  
**August-2003August-2004-branche(5)Old(15):brachial plexus(10)**  
**August-2003Sept-2012:March-2013:April-2010: :elbow joint(5)**  
**July-2013:Old:radial artery(5)**  
**Sept-2012: klumpke's paralysis(5)**  
**Sept-2011: August-2004: Erb's paralysis(5)**  
**April-2010:intrinsic musxles of hand(5)**  
**August-2004: cephalic vein(5)**  
**August-2004: arteries of hand(5)**  
**May-2003: clavi-pectoral fascia(5)**  
**Old:biceps brachi muscle(5)**





**SHREE H.N. SHUKLA**  
**HOMOEOPATHIC**  
MEDICAL COLLEGE & HOSPITAL  
DEPARTMENT  
OF  
**ANATOMY (PAPER-1)**

## **HEAD**

**Sept-2005:Infra temporal fossa(5)**

**Sept-2005:Describe anatomy of middle ear with applied anatomy(15)**

**Sept-2005: innervation of tongue(5)**

**Sept-2005:April-2015: retina(5)**

**Sept-2005, April-2015(15): August-2003March-2009:New::tonsil(5)**

**April-2006, April-2015(15): Describe in detail anatomy of tongue with clinical anatomy(20)**

**April-2006: Ennumerate salivary glands .Describe the anatomy of sub-mandibular salivary gland in detail(15)**

**Sept-2005: Ennumerate salivary glands .Describe the anatomy of August-2004: parotid gland in detail with applied anatomy(15)**

**April-2011:Sept-2010: parotid duct(5)**

**April-2006:, Aug-2007: Auditory tube(5)**

**April-2006:Sept-2010: lacrymal gland(5)**

**Sept-2012April-2010:: lachrymal apparatus(15)**

**Aug-2006: Describe in detail about paranasal sinks(10)**

**Aug-2006:, April-2015(15): April-2004(15): August-2003:July-2013April-2012:April-2011:Sept-2010-applied: Old: :scalp(5)**

**Aug-2006:Sept-2002:Sept-2011: palatine tonsil(5)**

**Aug-2007:April-2003(5): August-2003:April-2012:Sept-2010: Describe the anatomy of lateral wall of nose(15)**

**Aug-2007:Describe the anatomy of oropharynx(20)**

**Old:Nasal part of pharynx(20)**

**Aug-2007:April-2015, April-2003:April-2004March-2009March-2013April-2010:::Tympanic membrane(5)**

**Aug-2007:relations of April-2010:parotid gland(5)**

**April-2015:March-2009:July-2013:Sept-2012Sept-2011:: April-2011: nasal septum(5)**

**Sept-2002:pituitary gland(5)**

**Sept-2002:middle ear cavity(5)**

**April-2003:(1) muscles of mastication**

**(2)March-2013: anatomy of scalp with applied anatomy[20]**

**April-2003:teeth(5)**

**May-2003:Sub-mandibular salivary gland(6)**

**May-2003:Middle ear cavity(6)**

**April-2004July-2013:April-2010August-2004: ::tongue(15)**

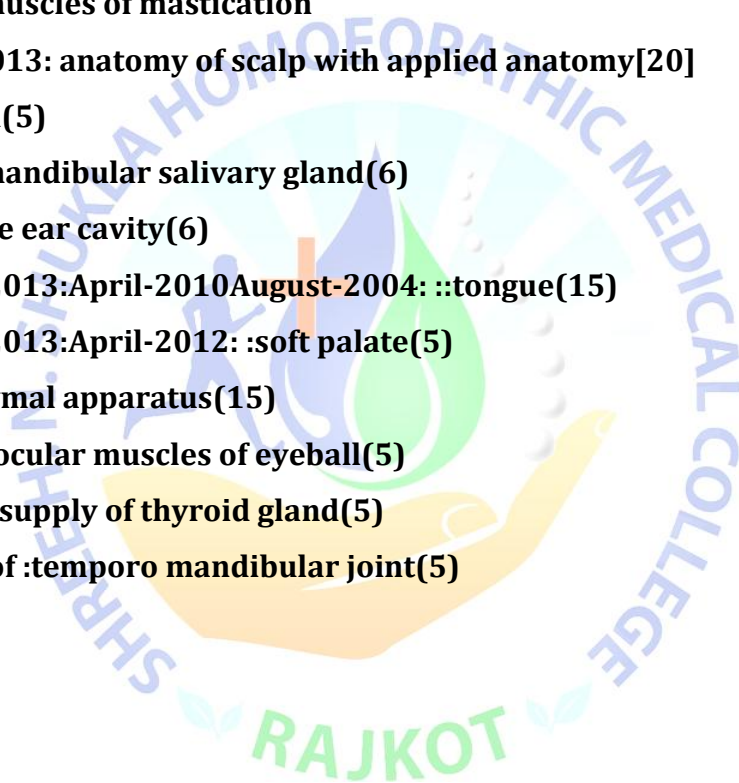
**April-2004July-2013:April-2012: ::soft palate(5)**

**July-2013:lachrymal apparatus(15)**

**July-2013:extra ocular muscles of eyeball(5)**

**July-2013:blood supply of thyroid gland(5)**

**Old: movement of :temporo mandibular joint(5)**





SHREE H.N. SHUKLA  
**HOMOEOPATHIC**  
MEDICAL COLLEGE & HOSPITAL  
DEPARTMENT  
OF  
**ANATOMY (PAPER-1)**

## NECK

Sept-2002:April-2003April-2004:Sept-2012:April-2011: :August-2004Old::  
Thyroid(15)  
April-2006: Describe cervical fascia in detail with applied anatomy(15)  
Sept-2005:Laryngeal gland(5)  
April-2015:March-2013:April-2011: April-2010:sternocleidomastoid muscle(5)  
Sept-2002:OldNew::external carotid artery(5)  
April-2003:carotid sheath(5)  
March-2003:August-2003, April-2012: Sept-2010New::Describe the posterior  
triangle of neck in detail with applied anatomy(15)  
July-2013:anterior triangle of neck(15)  
March-2013:Larynx(15)  
Sept-2011:cartilages of larynx(5)  
March-2013:Applied anatomy of August-2004(15) facial nerve(5)  
Sept-2011:facial artery(5)  
Sept-2011:extrinsic muscle of tongue(5)  
Old:deep cervical lymph nodes(5)





**SHREE H.N. SHUKLA**  
**HOMOEOPATHIC**  
MEDICAL COLLEGE & HOSPITAL  
DEPARTMENT  
OF  
**ANATOMY (PAPER-1)**

## FACE

March-2003:Sept-2012: Describe in brief the anatomy of face(15)

March-2003:Describe the extra-ocular muscles of the eyeball with their action ,  
nerve supply, and blood supply(15)

April-2012: external ear(5)

Sept-2011:danger area of face(5)

Sept-2010April-2010::bell's palsy(5)

April-2010:veins of face(5)





SHREE H.N. SHUKLA  
**HOMOEOPATHIC**  
MEDICAL COLLEGE & HOSPITAL  
DEPARTMENT  
OF  
**ANATOMY (PAPER-1)**

## **BRAIN**

Sept-2002: July-2013: Old New: Cerebellum (15)

Sept-2002: Old: Draw and label superolateral surface of cerebral hemisphere (sulci and gyri) (15)

Sept-2002: New: pons (5)

Sept-2002: April-2010: oculomotor nerve (5)

Sept-2002: 3rd ventricle (5)

Sept-2002: substantia nigra (5)

Sept-2005: Describe in detail blood supply of brain with applied anatomy (15)

Sept-2005: August-2003: March-2009: Sept-2011: April-2011: Sept-2010: April-2010: Describe in detail anatomy of corpus callosum (15)

Sept-2005: pineal body (5)

Sept-2005: Accessory nerve (5)

April-2006: Define white matters of cerebral hemispheres. Give types of white fibers of cerebral hemisphere. Describe in detail anatomy of corpus callosum with applied anatomy (15)

April-2006: Mid brain (5)

April-2006: Aug-2006, Aug-2007: April-2004: Facial nerve (5)

April-2006: Tactile sensation (5)

Aug-2006: March-2009: Sept-2012: Sept-2011: April-2011: August-2004: New: write third ventricle of brain in detail (15)

Aug-2006: August-2003: April-2012: New: internal capsule (5)

Aug-2006: cranial nerves (5)

Aug-2007:March-2009:Sept-2012:Sept-2011:August-2004: falx cerebri(5)  
Aug-2007:describe the anatomy of brainstem(20)  
April-2015:New:(10)-full: Applied anatomy of facial nerve(5)  
April-2015, March-2003(10):March-2013:describe lateral ventricle in detail(15)  
April-2015:falx-cerebelli(5)  
Sept-2002:internal capsule(5)  
April-2003:describe (i) April-2004: (15)August-2003: July-2013April-2012:Sept-2010:April-2010: Old::anatomy of fourth ventricle  
(II) anatomy of internal capsule with applied anatomy(20)  
April-2003:basal nuclei(5)  
April-2003:TS of August-2004(15): spinal cord(5)  
April-2003:circle of willis(5)  
March-2003:neuron(10)  
March-2003:Describe venous sinuses of duramatter and discuss August-2004(5):cavernous sinus in detail (15)  
May-2003:Enumerate endocrine and exocrine glands in the body. Describe pituitary gland in detail(14)  
May-2003:Enumerate the venous sinuses of duramater. Describe superior signal sinus in detail.(14))  
May-2003:Cerebrum(14)  
May-2003:August-2003:Hypothalamus(14)  
April-2004:tentorium cerebelli(5)  
Sept-2005:Aug-2006: Anatomy of spinal cord in detail(15)  
April-2004April-2012: Sept-2010-function:Old::thalamus(5)  
April-2004:July-2013:March-2013April-2010::August-2004New:: cerebro-spinal fluid(5)  
Sept-2012April-2011: : function of hypothalamus(5)  
Sept-2012: floor of fourth ventricle(5)  
Sept-2011:supeolateral surface of cerebral cortex(15)  
April-2011: applied anatomy of optic nerve(5)

**August-2004: pen down gross anatomy of cerebral hemispheres of the brain and also indicate their functional area(15)**

**August-2004: trigeminal nerve(5)**

**August-2004: posterior surface of pons(5)**

**Old:fornix(5)**





**SHREE H.N. SHUKLA**  
**HOMOEOPATHIC**  
MEDICAL COLLEGE & HOSPITAL  
DEPARTMENT  
OF  
**ANATOMY (PAPER-1)**

## **EMBRYOLOGY**

**Sept-2005:Ectoderm(5)**

**Sept-2005:Formation of cartilages(5)**

**April-2006:Sept-2012: ovum (5)**

**April-2006: Development of oesophagus(5)**

**Aug-2006: Describe in detail about layers of embryonic disc(20)**

**Aug-2006: Describe in detail about formation of placenta(20)**

**Aug-2007:division of mesodermal layer(5)**

**April-2015July-2013::April-2012:April-2011: Sept-2010:New:placenta(5)**

**March-2013:notocord(5)**

**Sept-2011:development of kidney(5)**