



# SHREE H. N. SHUKLA GROUP OF COLLEGES

(AFFILIATED TO SAURASHTRA UNIVERSITY & GTU)

2-Vaishali nagar,  
Near amrapali railway crossing,  
Raiya road, Rajkot- 360 001.  
Ph.No.-(0281) 2440478, 2472590

3-Vaishali nagar, Near  
amrapali railway crossing,  
Raiya road, Rajkot- 360 001.  
Ph.No.-(0281) 2224362

Behind marketing yard,  
Near Lalpari lake, Between  
Amargadh-Bhichri,  
Rajkot- 360 002.  
Ph.No. 90990 63150

## M.Sc. Chemistry Semester III (CBSE) C-302 Organic synthesis-A disconnection approach

**Question bank**

**Prepared by,  
Rahul Talaviya**



# SHREE H. N. SHUKLA GROUP OF COLLEGES

(AFFILIATED TO SAURASHTRA UNIVERSITY & GTU)

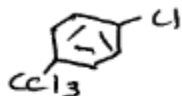
2-Vaishali nagar,  
Near amrapali railway crossing,  
Raiya road, Rajkot- 360 001.  
Ph.No.-(0281) 2440478, 2472590

3-Vaishali nagar, Near  
amrapali railway crossing,  
Raiya road, Rajkot- 360 001.  
Ph.No.-(0281) 2224362

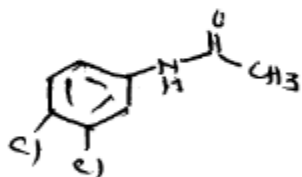
Behind marketing yard,  
Near Lalpari lake, Between  
Amargadh-Bhichri,  
Rajkot- 360 002.  
Ph.No. 90990 63150

## Q. Give the answer of each question (Each questions has two marks)

- (i) Define FGI considering a suitable example.
- (ii) Explain disconnection and write synthesis of



- (iii) Explain one group disconnection with suitable example.
- (iv) Explain two group disconnection with suitable example.
- (v) Give disconnection and write synthesis of



- (vi) Explain disconnection of saccharin.
- (vii) Explain disconnection of piperonal.
- (viii) Explain T.M.
- (ix) Explain the term order of events.



# SHREE H. N. SHUKLA GROUP OF COLLEGES

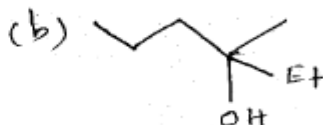
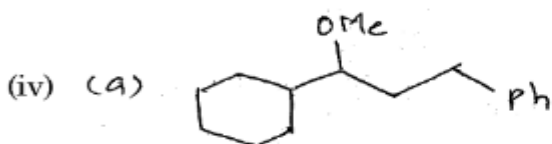
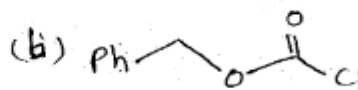
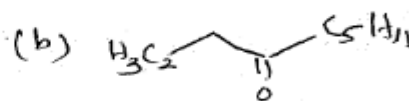
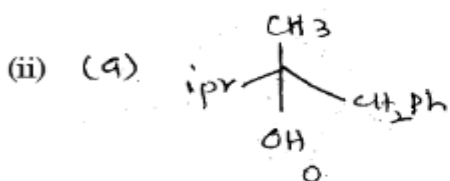
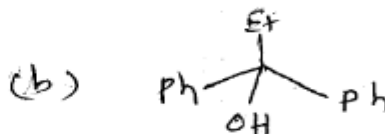
(AFFILIATED TO SAURASHTRA UNIVERSITY & GTU)

2-Vaishali nagar,  
Near amrapali railway crossing,  
Raiya road, Rajkot- 360 001.  
Ph.No.-(0281) 2440478, 2472590

3-Vaishali nagar, Near  
amrapali railway crossing,  
Raiya road, Rajkot- 360 001.  
Ph.No.-(0281) 2224362

Behind marketing yard,  
Near Lalpari lake, Between  
Amargadh-Bhichri,  
Rajkot- 360 002.  
Ph.No. 90990 63150

**Q. Give the answer of each question (Each question has three marks)**





# SHREE H. N. SHUKLA GROUP OF COLLEGES

(AFFILIATED TO SAURASHTRA UNIVERSITY & GTU)

2-Vaishali nagar,  
Near amrapali railway crossing,  
Raiya road, Rajkot- 360 001.  
Ph.No.-(0281) 2440478, 2472590

3-Vaishali nagar, Near  
amrapali railway crossing,  
Raiya road, Rajkot- 360 001.  
Ph.No.-(0281) 2224362

Behind marketing yard,  
Near Lalpari lake, Between  
Amargadh-Bhichri,  
Rajkot- 360 002.  
Ph.No. 90990 63150

**Q. Give the answer of each question (Each question has five marks)**

