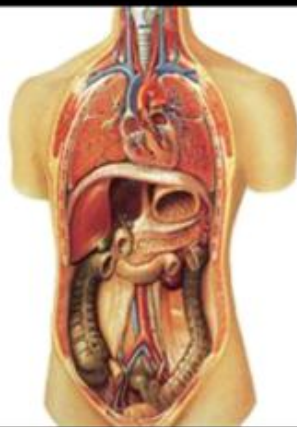




SHREE H.N. SHUKLA

HOMOEOPATHIC

MEDICAL COLLEGE & HOSPITAL



**DEPARTMENT OF
ANATOMY**

**DEPARTMENT
OF
ANATOMY**

**QUESTION BANK
ANATOMY PAPER-2**



SHREE H.N. SHUKLA
HOMOEOPATHIC
MEDICAL COLLEGE & HOSPITAL
DEPARTMENT
OF
ANATOMY (PAPER-2)

LOWER LIMB

March-2002:Sept-2005:April-2012: Describe course and relations of femoral artery(12)

March-2002:March-2002(5): Adductor magnus(6)

March-2002: March-2009Sept-2005:with hernia:Femoral sheath(6)

March-2002: Inguinal ligament(6)

March-2002: April-2002: (5) : Gastrocnemius muscle(6)

April-2015:August-2007July-2013::March-2013:Sept-2011:April-2011: Describe femoral triangle in detail(15)

April-2015:March-2002:August-2004: common peroneal nerve(5)

April-2015:applied anatomy ofApril-2012(15) ankle joint(5)

April-2008: August-2004Sept-2005::April-2014Sept-2012::Sept-2011-applied:(5) April-2010:Describe hipjoint (15)

March-2009:knee joint(15)

April-2008:March-2002(5): Sept-2002Sept-2011-function: :Arches of foot(15)

April-2008:April-2002: May-2003August-2007::April-2014:great saphenous vein(5)

Sept-2005:saphenous opening(5)

April-2008:April-2003(6):July-2013: sartorius muscle(5)

April-2002: : femoral triangle(15)

April-2002: May-2003(12) April-2003(12):August-2007:August-2004: April-2010:April-2014:Sept-2012:Sept-2011: popliteal fossa(5)

Sept-2002April-2003::adductor canal(15)

Sept-2002:femoral canal(7.5)

May-2003:April-2003April-2004::obturator nerve(6)

May-2003:Sept-2012April-2003::Soleus muscle(6)

May-2003April-2012:April-2011: :Examples and characteristics of hamstring muscles(4)

May-2003:Factor responsible for maintainence of longitudinal arch of foot(4)

April-2003:sub-sartorial canal(6)

April-2003:July-2013April-2012: :sciatic nerve(6)

April-2004:July-2013:popliteal artery(5)

April-2004April-2006::cruciate ligament(5)

March-2009:gluteus maximus muscle(5)

August-2007:Muscles of gluteal region(2)

August-2007:Muscles supplied by obturator nerve(2)

August-2007:ligaments of knee joint(2)

August-2007August-2007::Femoral nerve(5)

August-2007:lock and unlock of knee joint(5)

April-2006:Ennumerate and describe the structures under cober of gluteus maximus muscle(15)

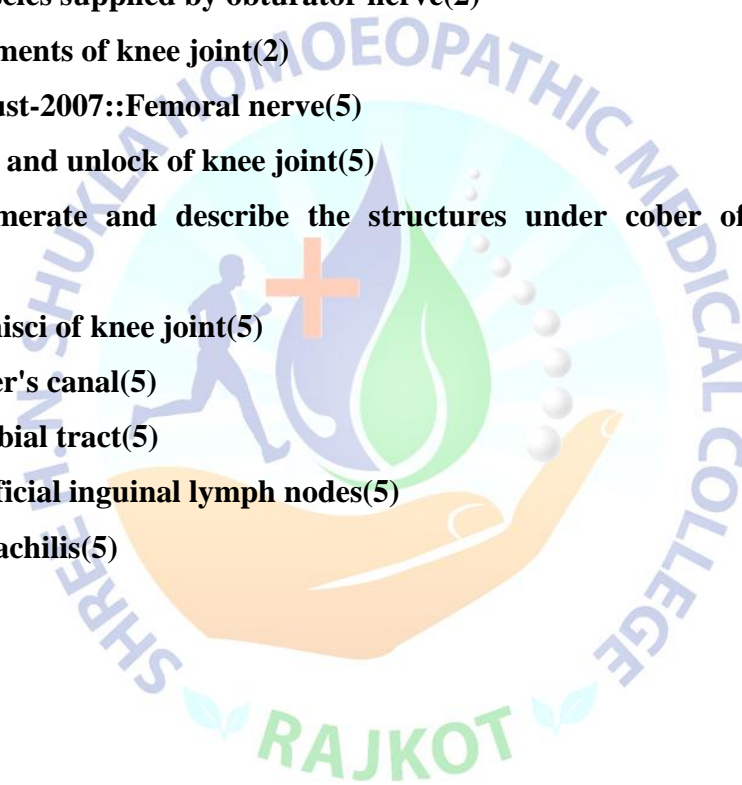
March-2013: menisci of knee joint(5)

April-2012: hunter's canal(5)

April-2012: illiotibial tract(5)

April-2003:superficial inguinal lymph nodes(5)

April-2011:tendoachillis(5)





SHREE H.N. SHUKLA
HOMOEOPATHIC
MEDICAL COLLEGE & HOSPITAL
DEPARTMENT
OF
ANATOMY (PAPER-2)

PELVIS

March-2002:Sept-2005:July-2013:Sept-2012: Describe anatomy of male urethra(12)
March-2002: , April-2015(15): August-2003(15):July-2013: Sept-2011: Prostate gland(6)
March-2002:April-2002: (5)August-2004March-2013: :Sept-2011: Ischio-rectal fossa(6)
April-2008:April-2004April-2010-applied(5):: Describe rectum(15)
April-2015:,April-2008:April-2004:(5) Describe male urethra in detail(15)
April-2015April-2004:(7)April-2014::Sept-2012:April-2012:April-2003: April-2011:
Fallopian tubes(5)
April-2008:uterine tubes(5)
April-2008:contents of pelvis(5)
April-2002: Sept-2002(15): April-2003(12): March-2013:April-2010: uterus(5)
Sept-2002:August-2007:July-2013:ovary(7.5)
Sept-2002April-2003(6):August-2004::April-2014April-2012: April-2003::testes(7.5)
Sept-2002April-2004Sept-2005(5)::March-2013: April-2012: spermatic cord(7.5)
May-2003:July-2013:Supports of uterus(6)ligaments of uterus -March-2009:April-2012:
Sept-2011: April-2011:
April-2003:vagina(6)
April-2003:scrotum(4)
April-2007: penis(5)
March-2009:boundaries of Sept-2012:April-2010:perineum(5)
April-2006:undescended testes(5)
April-2011:anal canal(15)



SHREE H.N. SHUKLA
HOMOEOPATHIC
MEDICAL COLLEGE & HOSPITAL
DEPARTMENT
OF
ANATOMY (PAPER-2)

ABDOMEN

March-2002: Phrenic nerve(6)

March-2002: Describe anatomy of April-2012-head: Sept-2011: April-2010-applied: pancreas(14)

April-2007: tail of pancreas(5)

March-2002: May-2003 March-2013: Describe anatomy of duodenum(14)

March-2002: Sept-2005: Sept-2012: March-2013: April-2010: Rectus sheath(6)

March-2002: Peritoneum(6)

March-2002: April-2014-applied : Diaphragm abdominal(6)

March-2002: March-2002(5): Ureter(6)

April-2008 Sept-2005: April-2014: Sept-2011: oesophagus(5)

April-2015: May-2003: April-2003: April-2010: Describe liver in detail(15)

April-2015: March-2002: April-2014: July-2013: March-2013: Sept-2011: April-2010: Appendix(5)

April-2015: April-2006: Coeliac trunk (5)

April-2015: Applied anatomy of April-2014: April-2012: rectum(5)

April-2008: Sept-2011- posterior relation(5): April-2011: Describe kidney in detail(15)

April-2003: draw and label ant and post relations of right and left kidneys(20)

April-2008: visceral surface of Sept-2005: April-2014: April-2012: spleen(5)

April-2008: March-2009 July-2013 April-2011: 2nd part of duodenum(5)

April-2008 April-2003: mesentery(5)

April-2002: August-2004 July-2013: Sept-2012: stomach(15)

April-2002: Sept-2002(20): duodenum(15)

April-2002: August-2007April-2006::April-2014applied:Sept-2012: :gall bladder(5)

April-2002:August-2007: abdominal aorta(5)

May-2003August-2007:(15):rectum(12)

May-2003:Relations of right August-2004(15): kidney(6)

May-2003:blood supply and relations of stomach(6)

May-2003:openings in the diaphragm (4)

April-2003:March-2009April-2006August-2004:::spleen(14)

April-2003:abdominal diaphragm(14)

April-2003:bile duct(6)

April-2003:inguinal ligament(6)

April-2006April-2011::inguinal canal(5)

March-2009August-2007:April-2006::August-2004April-2003::urinary bladder(15)

March-2009:inferior surface of liver(5)

March-2009:April-2011:difference between small intestine and large intestine(5)

August-2007:stomachbed(5)

August-2007April-2003::suprarenal gland(5)

April-2006:Describe difference between small intestine and large intestine. Describe second part of duodenum in detail. Applied anatomy of duodenum(20)

August-2004April-2011::caecum(5)

August-2004:March-2013: porta-hepatis(5)

March-2013: inlet of diaphragm(5)

New-ductus deferens(5)

New-stomach-lymphatic drainage(5)

New-impressions on inferior surface of liver(5)



SHREE H.N. SHUKLA
HOMOEOPATHIC
MEDICAL COLLEGE & HOSPITAL
DEPARTMENT
OF
ANATOMY (PAPER-2)

THORAX

March-2002August-2004Sept-2005(5)::Sept-2012April-2012 April-2010::April-2011:
:Describe course and relations of thoracic duct(14)

March-2002August-2007:July-2013:: April-2011:Describe course and relations of azygos vein(14)

March-2002: Ductus arteriosus(6)

March-2002: Posterior mediastinum(6)

April-2003:April-2006(10)Sept-2005:April-2006: superior mediastinum(6)

March-2002: Left brachio-cephalic vein(6)

April-2008: Describe lungs in detail(15)

April-2008:Sept-2002(7.5)April-2003(14):April-2004(15):August-2007:April-2006:(10)April-2006: arch of aorta(5)

April-2008:azygos vein(5)

April-2015:March-2013: Describe right chambers of heart in detail(15)

April-2015, Sept-2002(7.5) :May-2003:Sept-2012:-applied:March-2013:April-2010: Pleura(5)

April-2015:March-2009April-2006::April-2014Sept-2012::Trachea(5)

April-2015:April-2002: :Sept-2002(7.5): Thoracic duct(5)

April-2002: Left ventricle(15)

April-2002: May-2003:April-2003:April-2003: right atrium(15)

April-2002:May-2003:April-2003: March-2009August-2004::superior vena cava(5)

April-2002: Transverse sinus of pericardium(5)

Sept-2002: August-2007:Sept-2005:Describe pulmonary segment of lungs and its clinical significance(20)

Sept-2002:March-2009August-2007::August-2004:July-2013:April-2012:mediastinum(7.5)

Sept-2002:intercostal nerve(7.5)

May-2003:Valves of heart(6)

May-2003:intercostal muscles(6)

May-2003:typical intercostal nerve(4)

May-2003:left coronary artery(4)

April-2003:Sept-2011: pericardium(6)

April-2003:root of lung(6)

April-2004:hilum of lung(5)August-2007:hilum of right lung.(4)

August-2007:atrium proper(4)

April-2003:pulmonary trunk(6)

April-2004:Mitral valve(5)

April-2004:sinuses of pericardium(5)

August-2007:heart(15)

August-2007:intercostal structures(4)

August-2007:name the branches of desc. Thoracic aorta(2)

August-2007:Name tributaries of July-2013: coronary sinus(2)

August-2007:ascending aorta(5)

August-2007 April-2003(10) :inlet of thorax(5)

April-2006:typical intercostal space(5)

August-2004April-2014::Sept-2012: April-2010: left chambers of heart(15)

August-2004: Sept-2011: right lung(15)

Sept-2005:Describe chambers of heart. Describe lt. Ventricle (15)

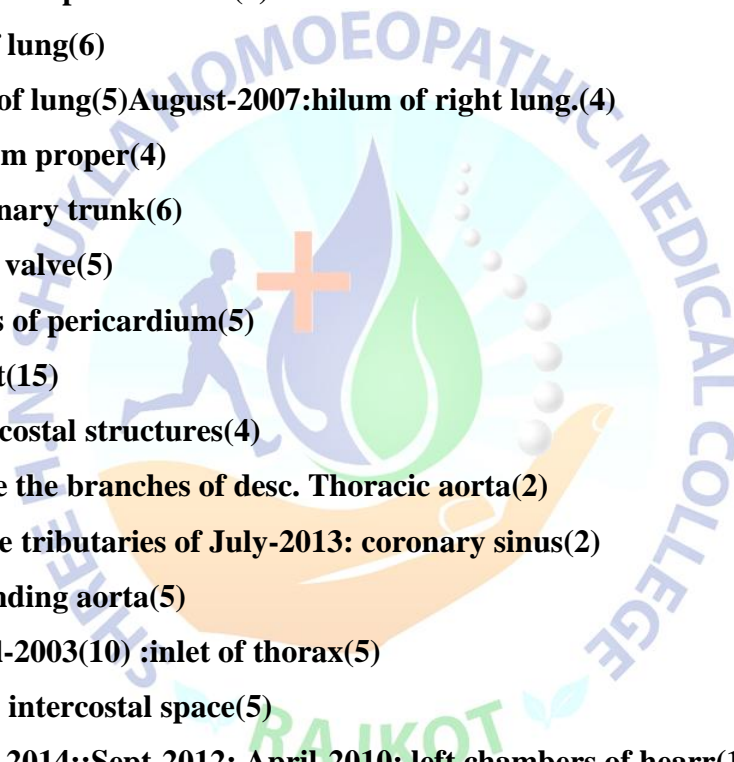
Sept-2005:mechanism of respiration and muscle producing it(5)

April-2003:arterial supply of heart with applied anatomy(10)

April-2011:importance of sternal angle(5)

Old-descending thoracic aorta(5)

April-2011:External features of lungs and difference between right and left lungs(15)





SHREE H.N. SHUKLA
HOMOEOPATHIC
MEDICAL COLLEGE & HOSPITAL
DEPARTMENT
OF
ANATOMY (PAPER-2)

HISTOLOGY

April-2015:Sept-2012April-2012: :Histology of kidney(5)

March-2009:April-2014April-2010::artery(5)

August-2007:trachea(5)

April-2006:liver(5)

July-2013:histology of pancreas(5)

Sept-2005:histology(5)

March-2013: histology of vein(5)

Sept-2011: histology of large intestine(5)

April-2011:histology of stomach(5)

April-2007: bone

